



AUSBAUSTUDIE KOPFBAU



Website Link →

Ausbau- beschreibung

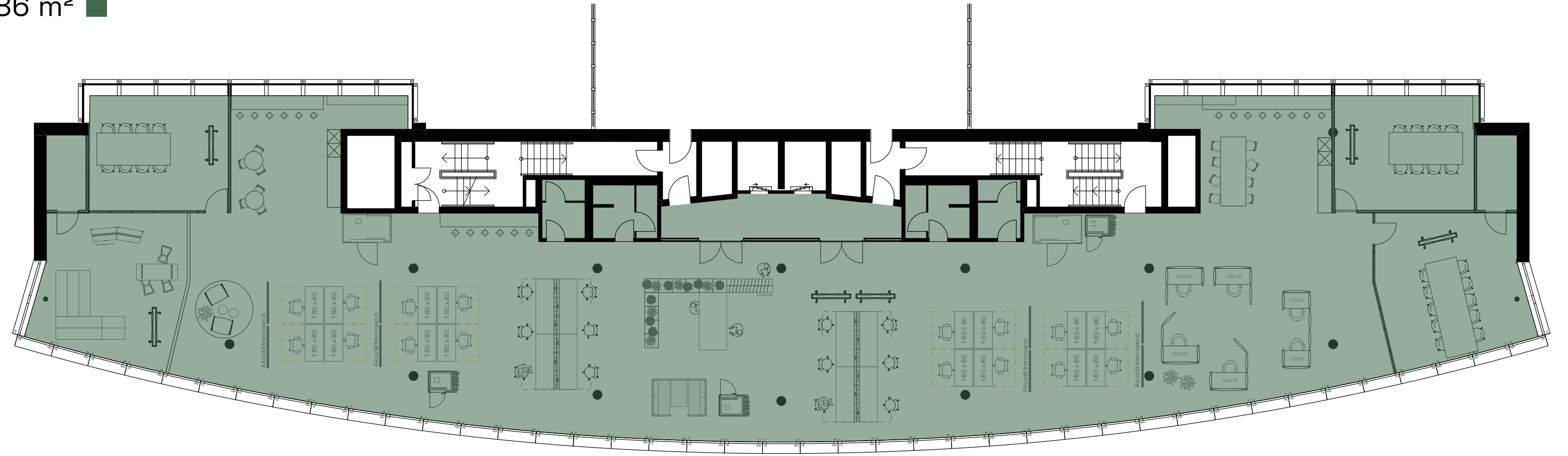
- Flächen ab ca. 343 m² bis 1'403 m²
- Fläche insgesamt 2 Geschosse ca. 686 m² und 717 m²
- Bezug ab sofort
- Büroflächen 290 CHF/m²/a voll ausgebaut + NK akonto 45 CHF/m²/a

- Flexible Büroräume nach Süden mit weitem Ausblick
- Lichte und helle Räume mit durchgängiger Fensterfront
- Ausgebaute Meetingräume und Teeküche
- Elektro-Brüstungskanäle mit Heizkörpern entlang der Fenster
- Vollklimatisierte Büroräume sowie frische, hygienische Luft durch mechanische Lüftung
- Manuelle Fensterlüftung zusätzlich möglich
- Abgehängte Kühlsegel an den Decken sorgen für behagliches Raumklima im Sommer und Winter
- Hochwertiger, heller, warmer Teppichboden aus recycelten Materialien und Cradle to Cradle zertifiziert
- Glaswände zu den Sitzungszimmern mit erhöhten Schallanforderungen

AUFTEILUNG

1-Teilig

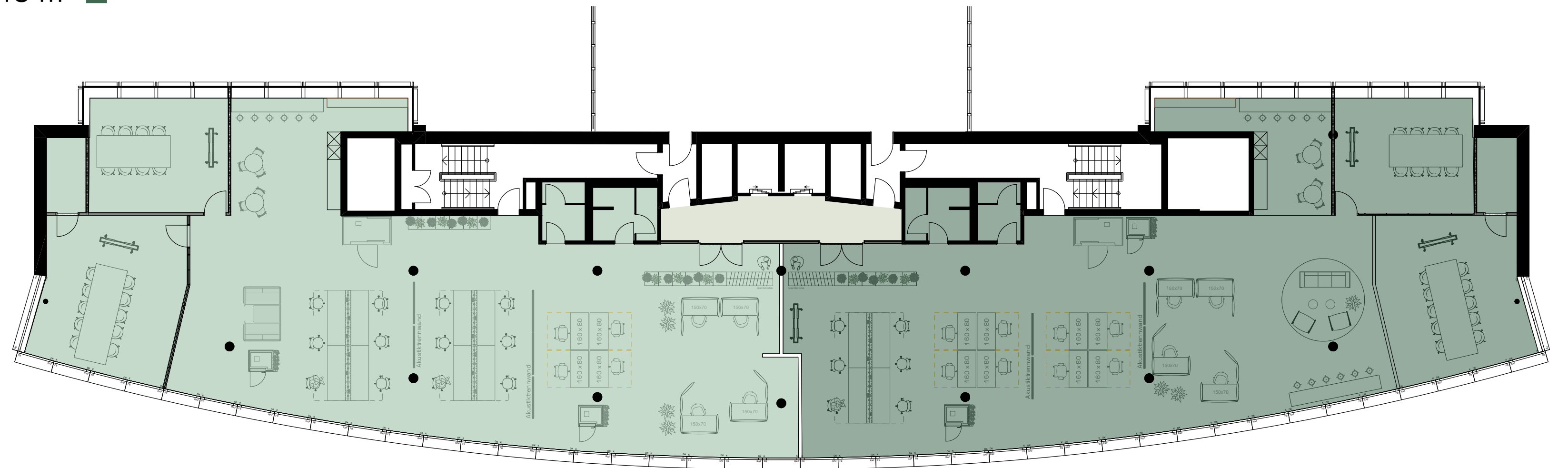
ca. 686 m² ■



2-Teilig

ca. 343 m² ■

ca. 343 m² ■

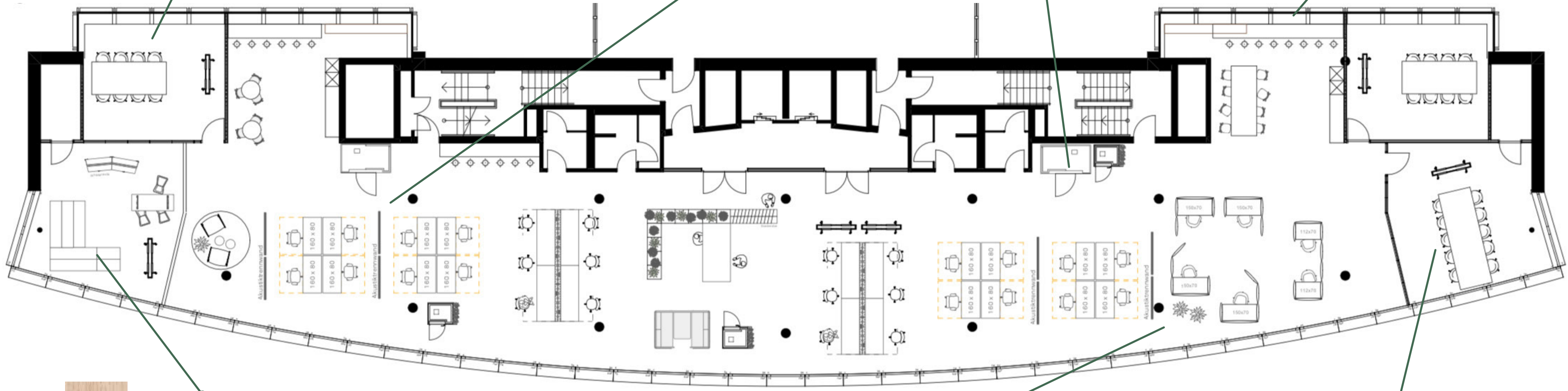


MOODBOARD



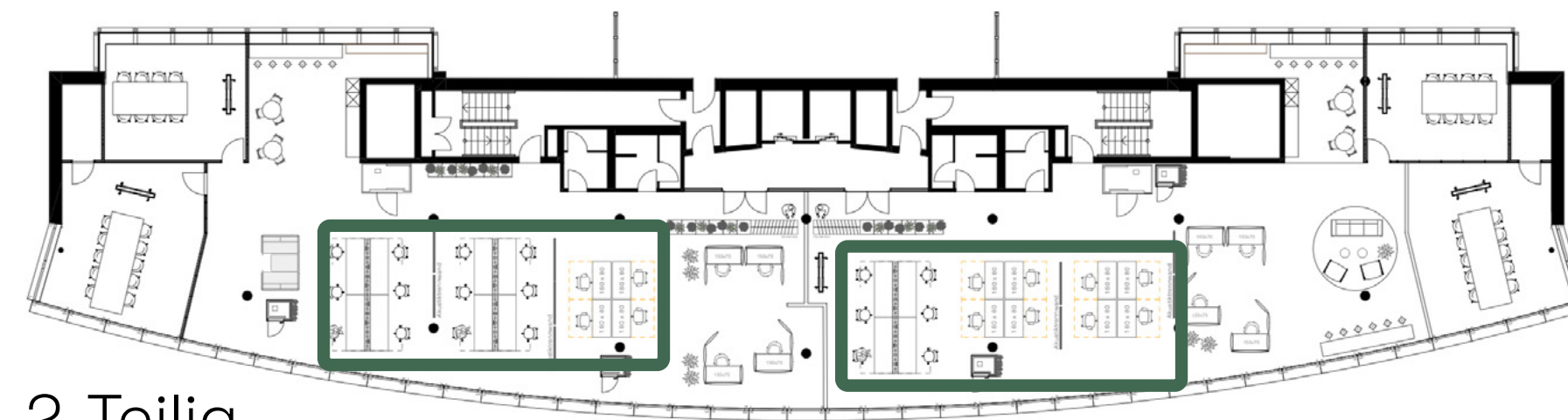
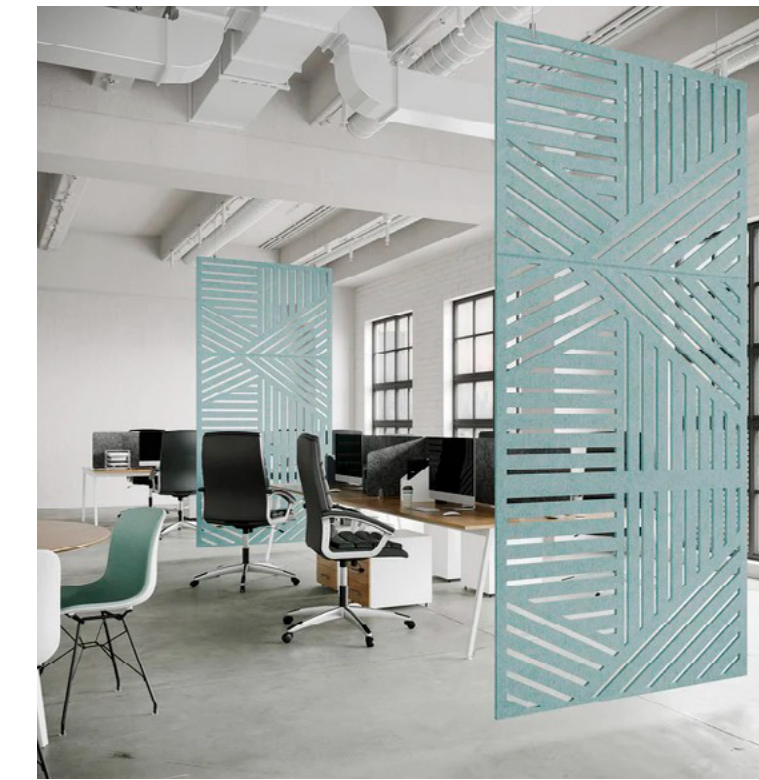
03

FLÄCHENLAYOUT

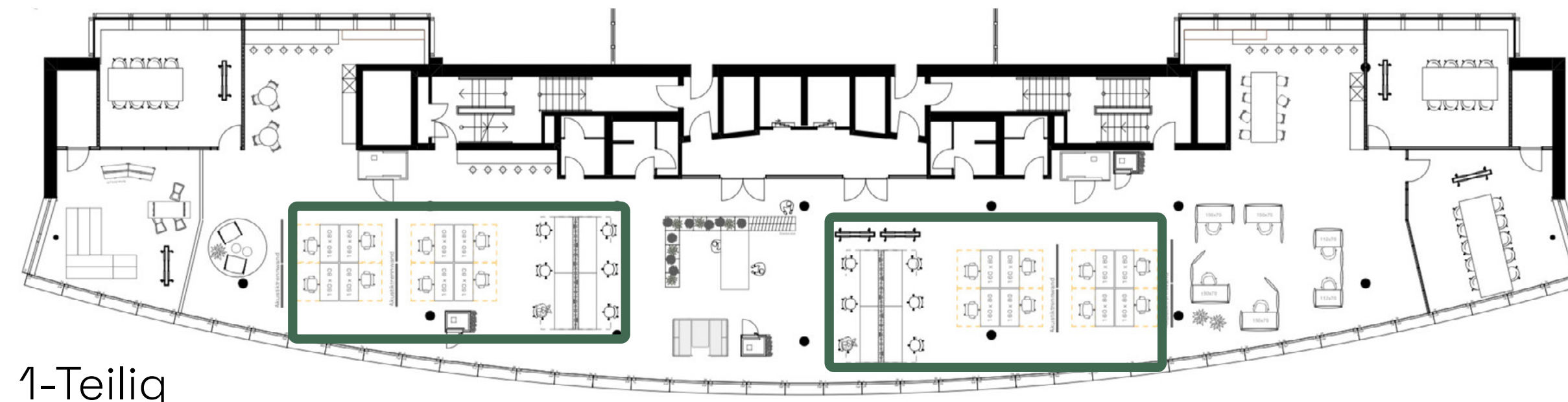


04

ARBEITSPLÄTZE



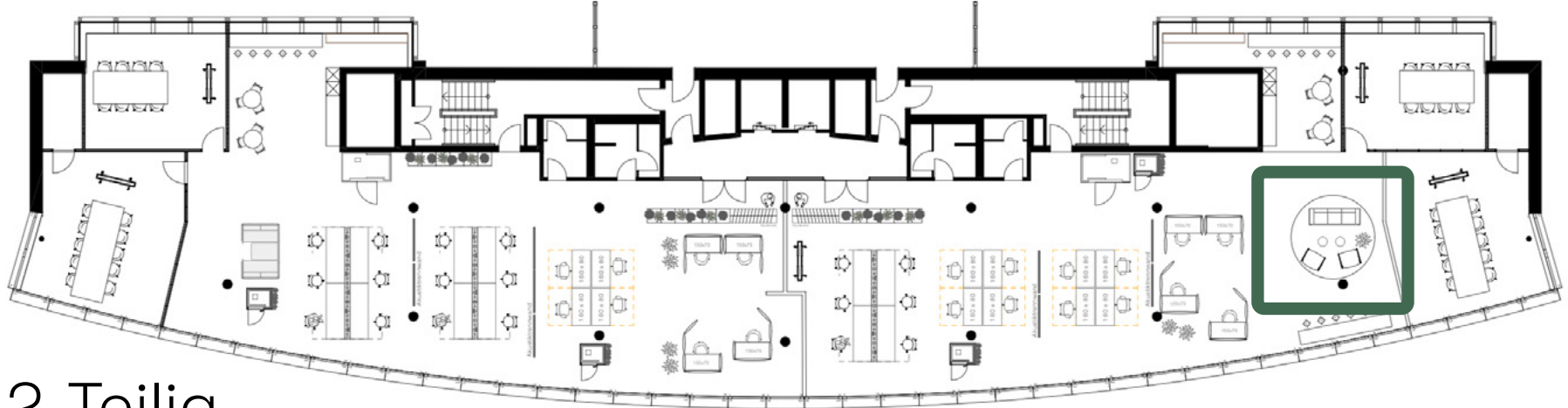
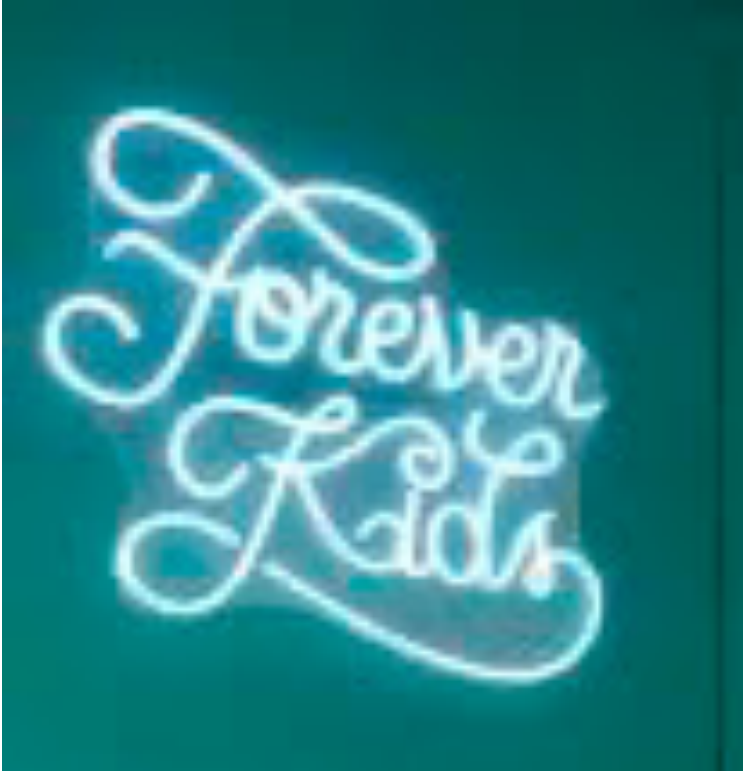
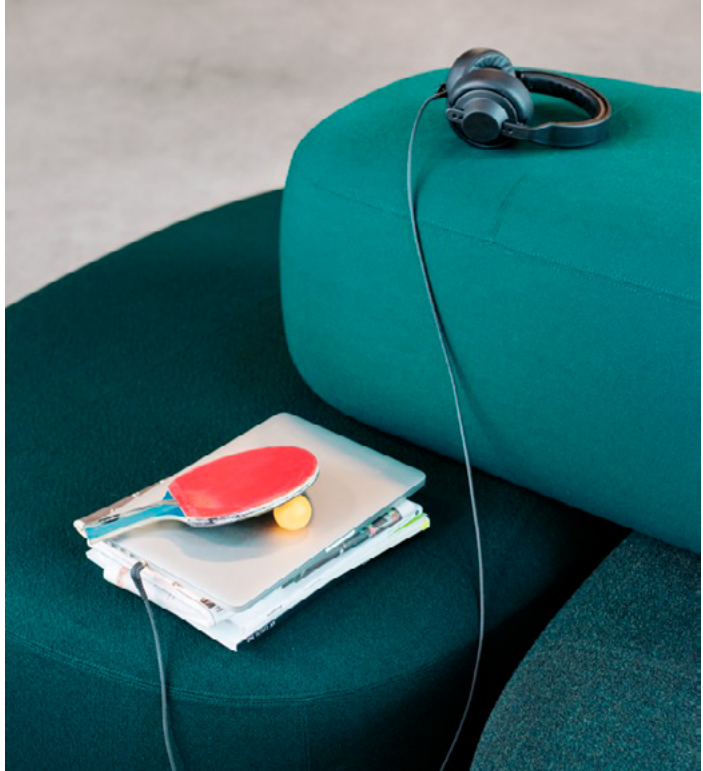
2-Teilig



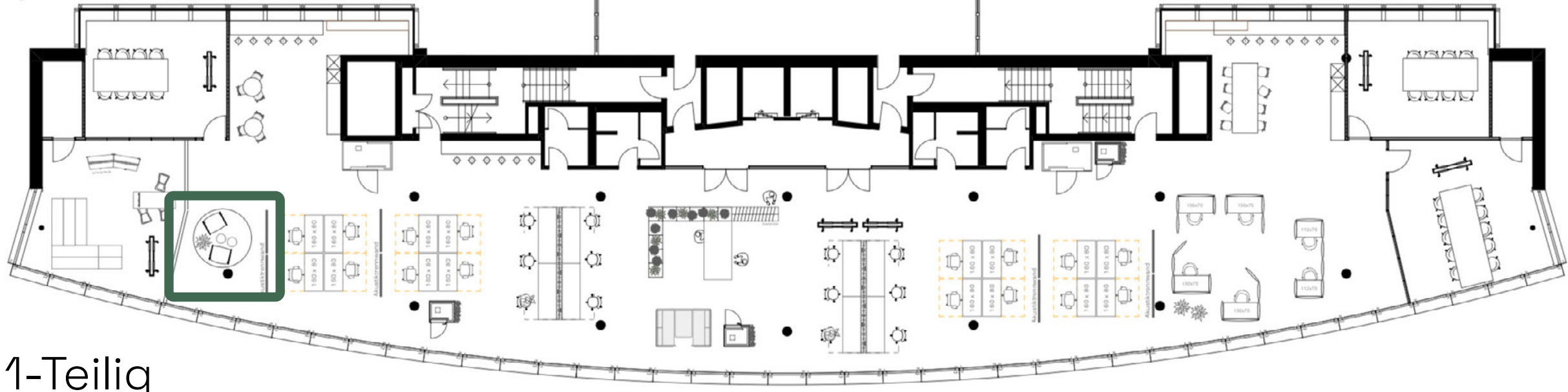
1-Teilig

05

LOUNGE



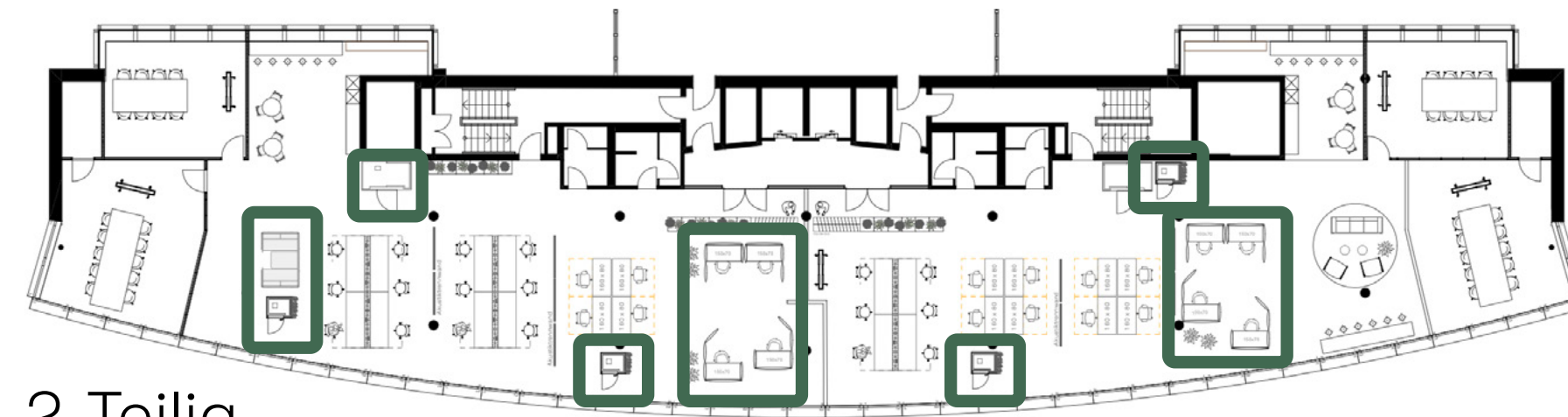
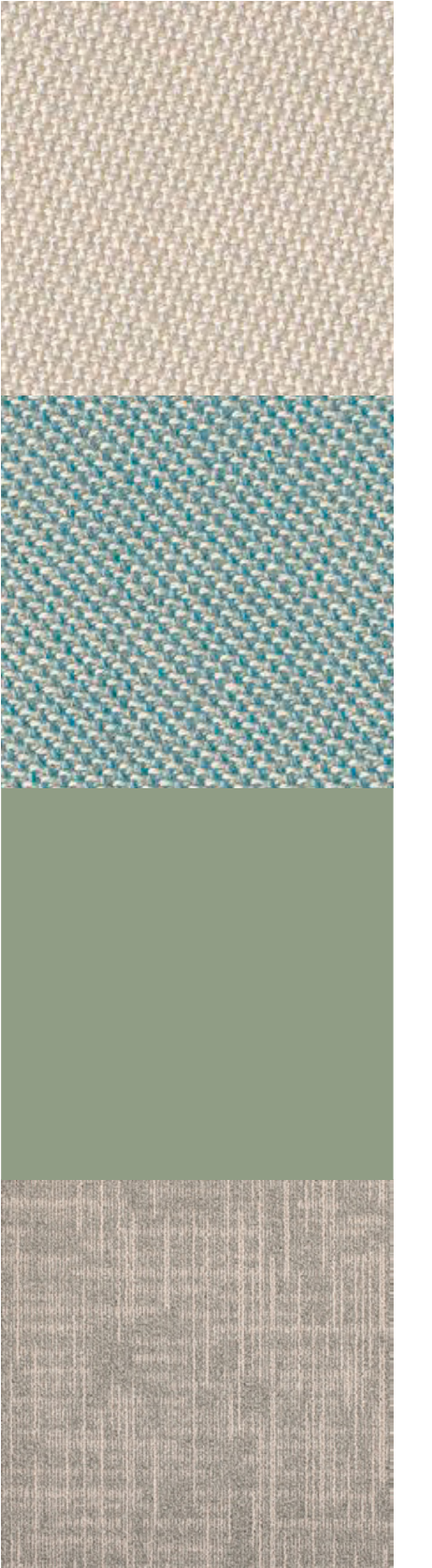
2-Teilig



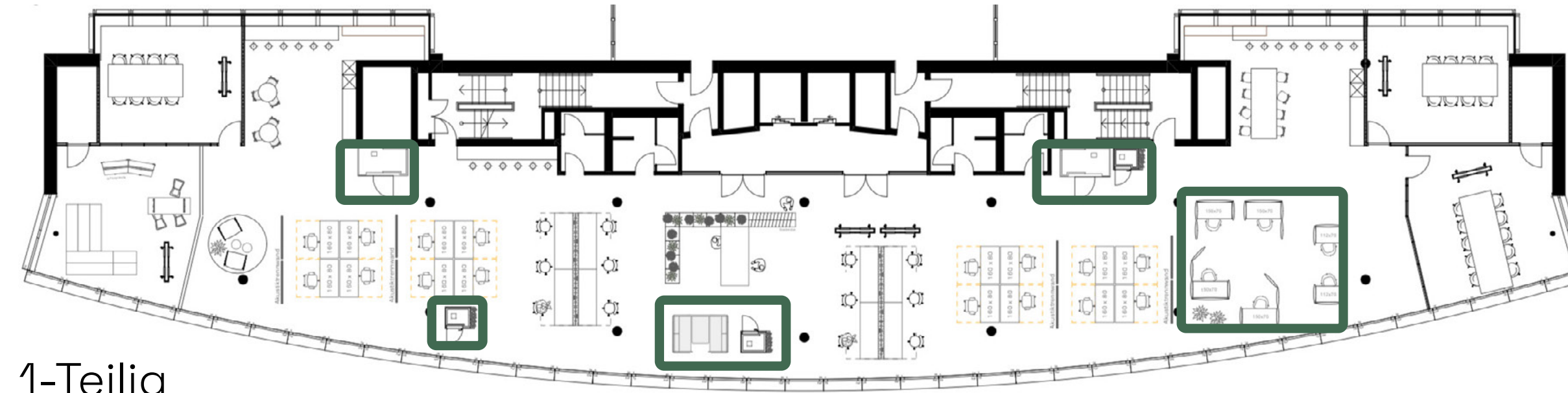
1-Teilig

06

FOCUS



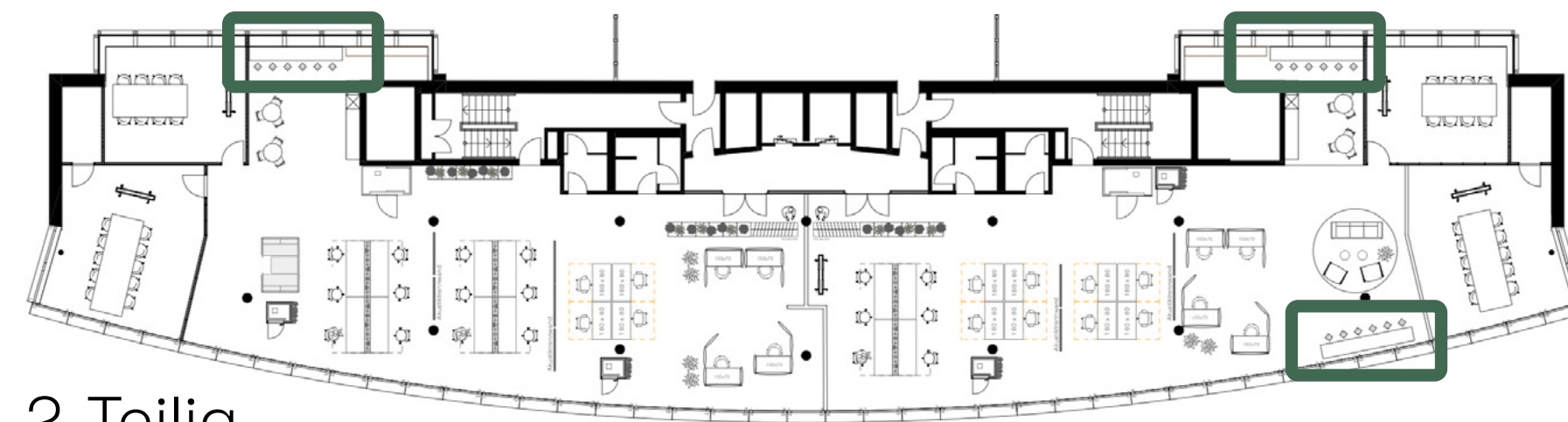
2-Teilig



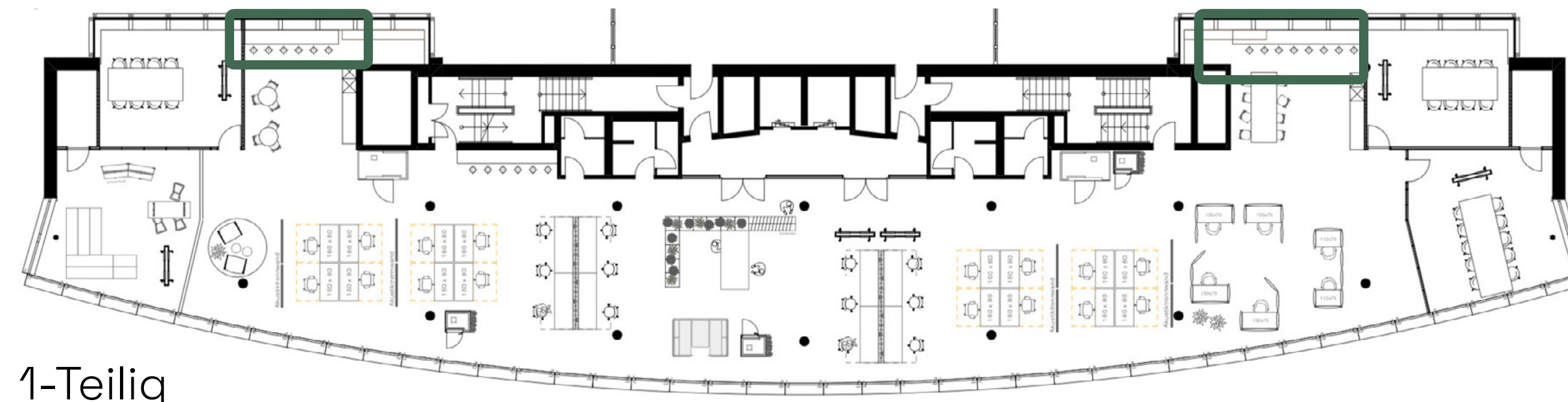
1-Teilig

07

WORKBAR

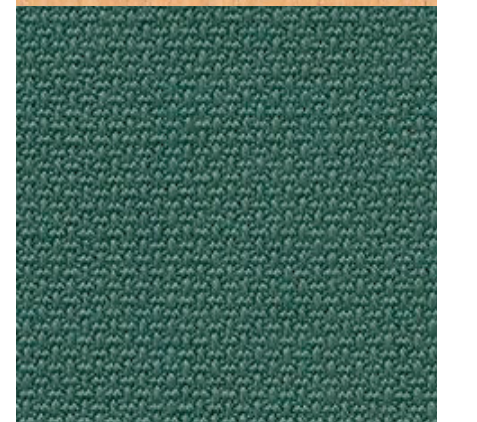
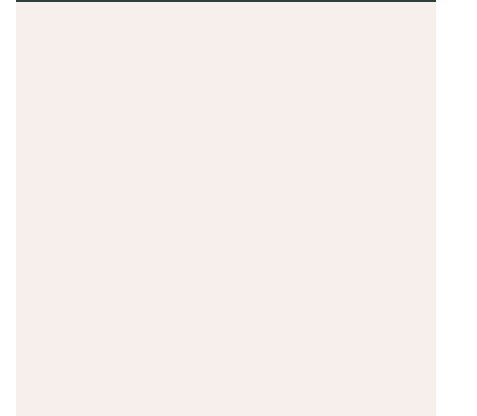


2-Teilig

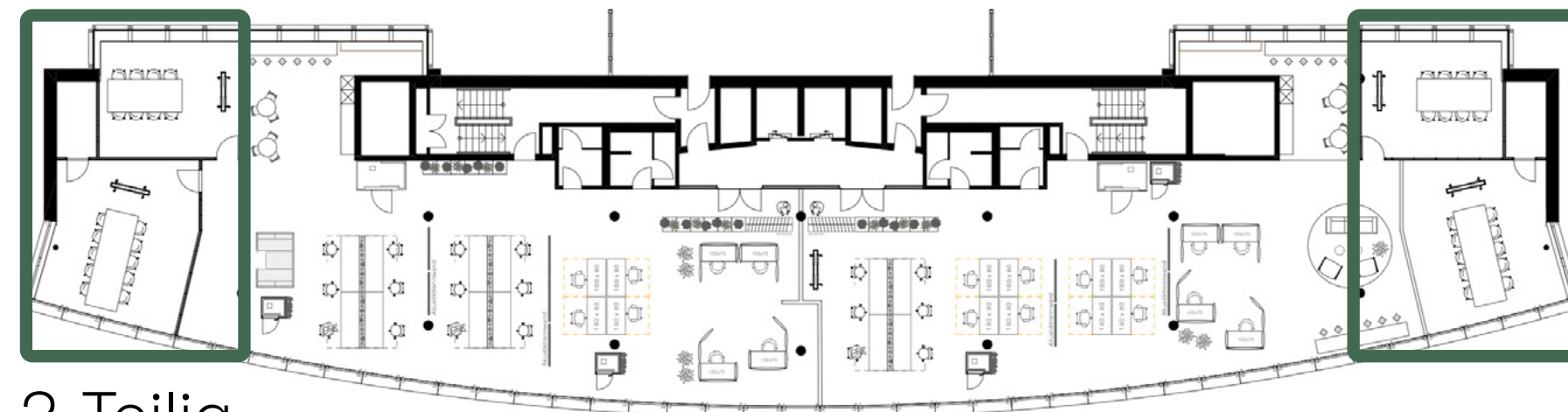


1-Teilig

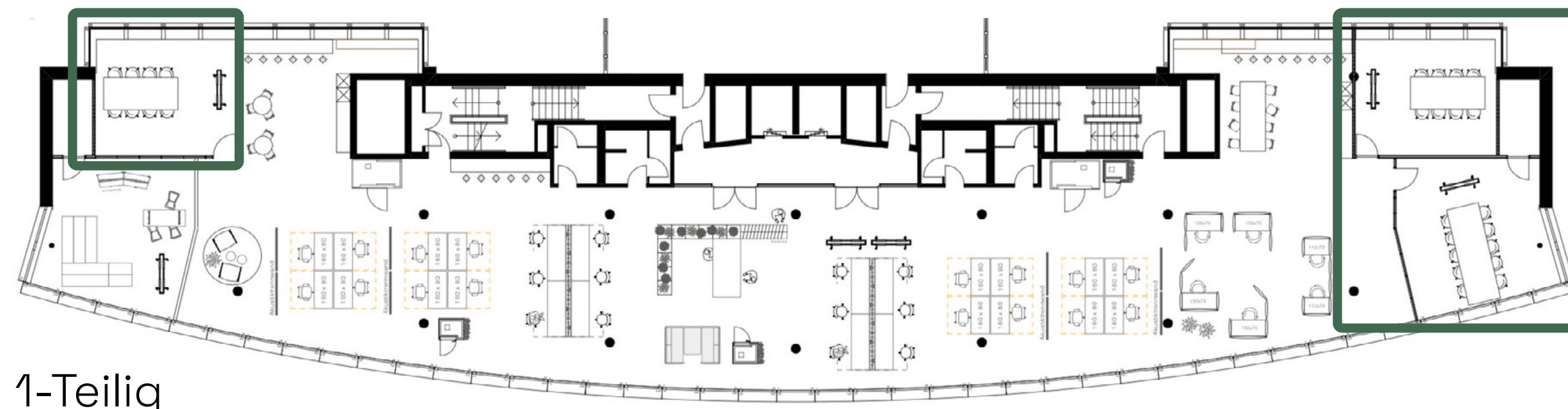
08



MEETING

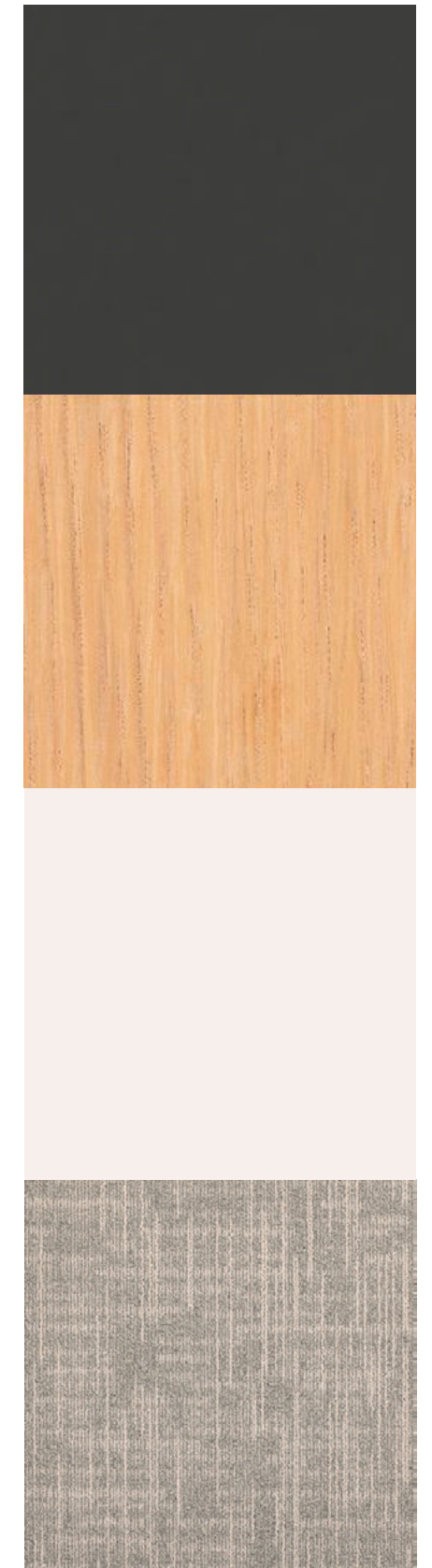


2-Teilig

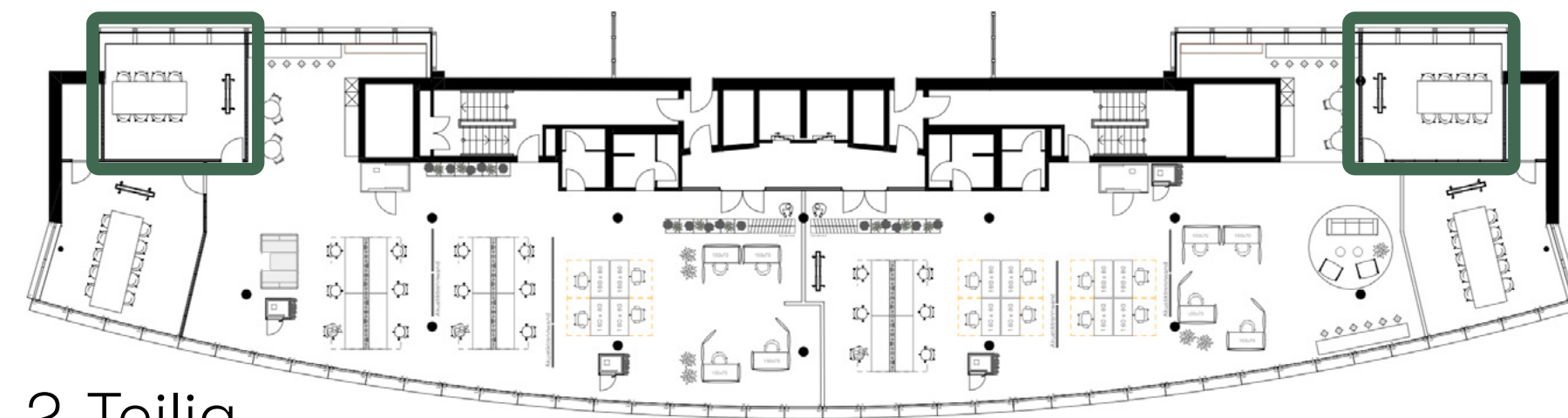
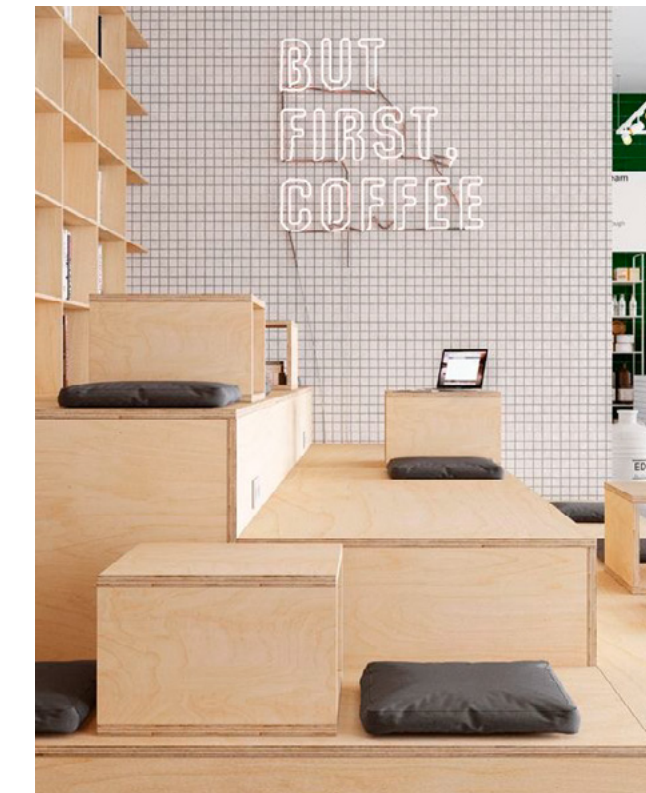


1-Teilig

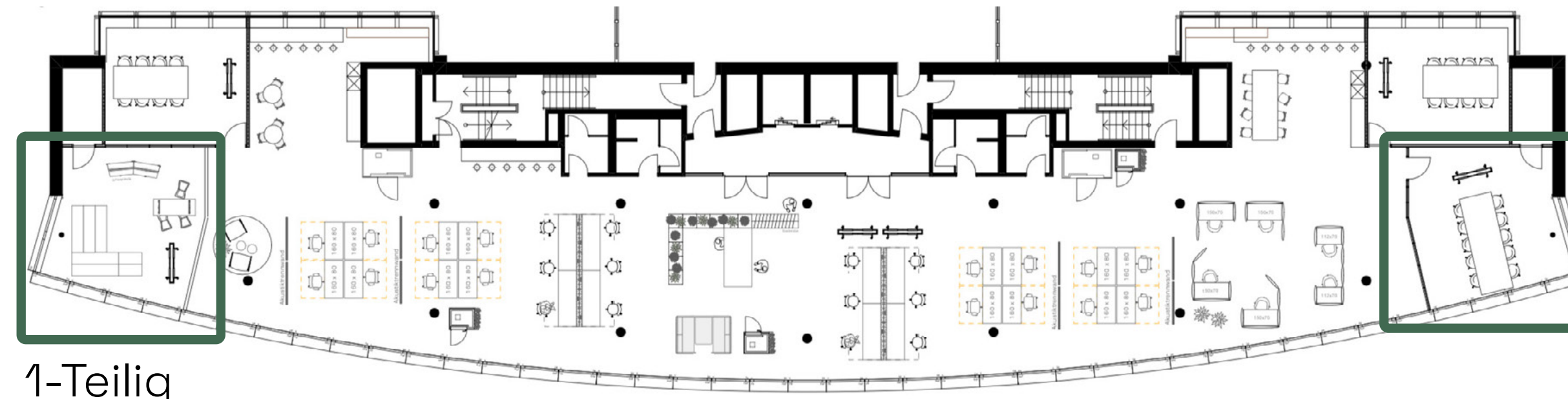
09



WORKSHOP



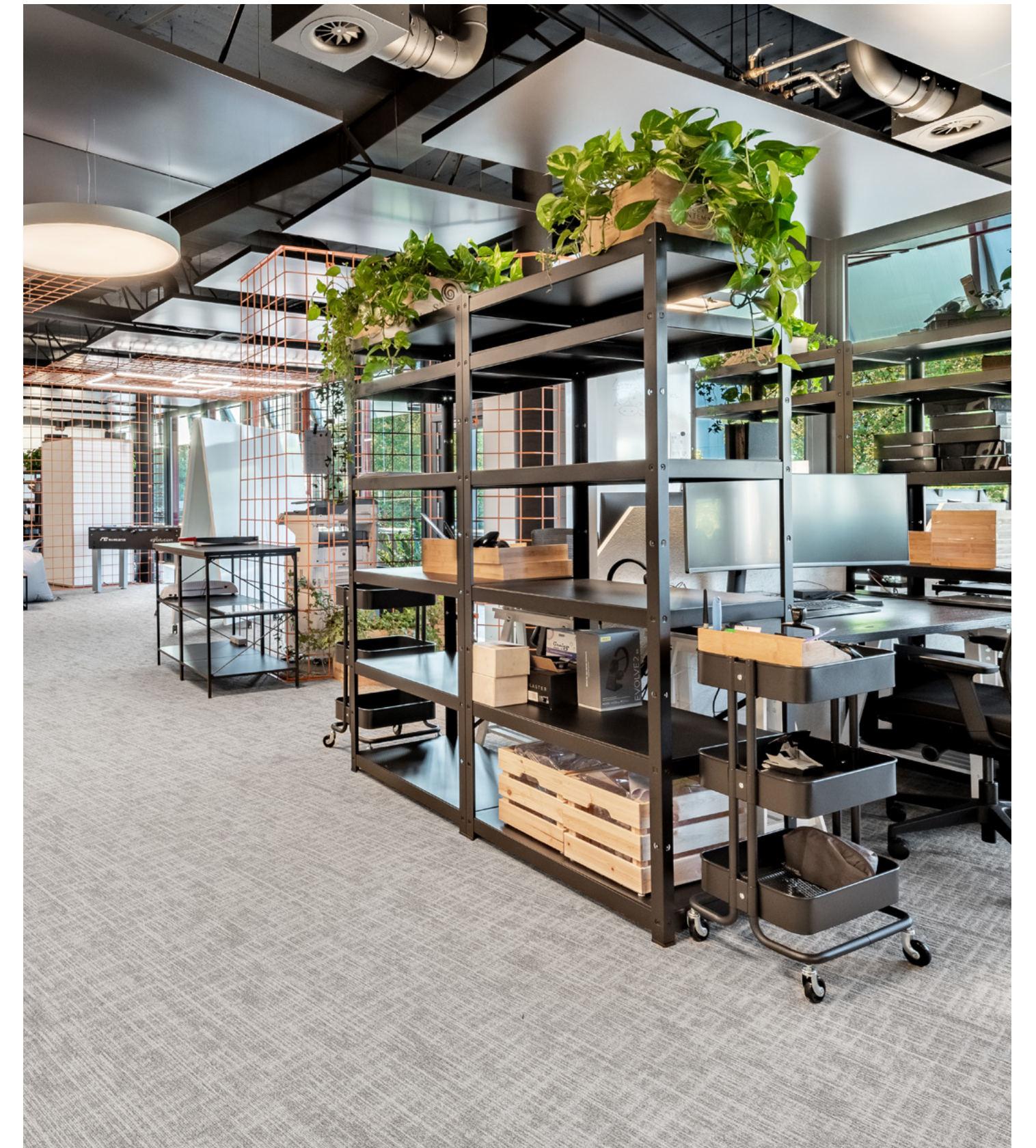
2-Teilig



1-Teilig



MÖBLIERT



KONTAKT

Vermietung
Büro/Gewerbe

SWISS PRIME SITE

Swiss Prime Site
Immobilien AG

Prime Tower
Hardstrasse 201
CH-8005 Zürich

Dilara Gonzalez
+41 58 317 15 22
Dilara.gonzalez@sps.swiss

Website Link →

12